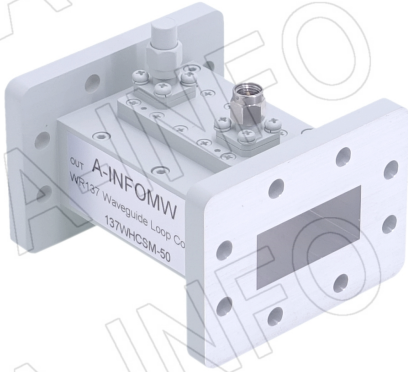


For reference only. See data sheet for the detailed specifications.

Technical Specification

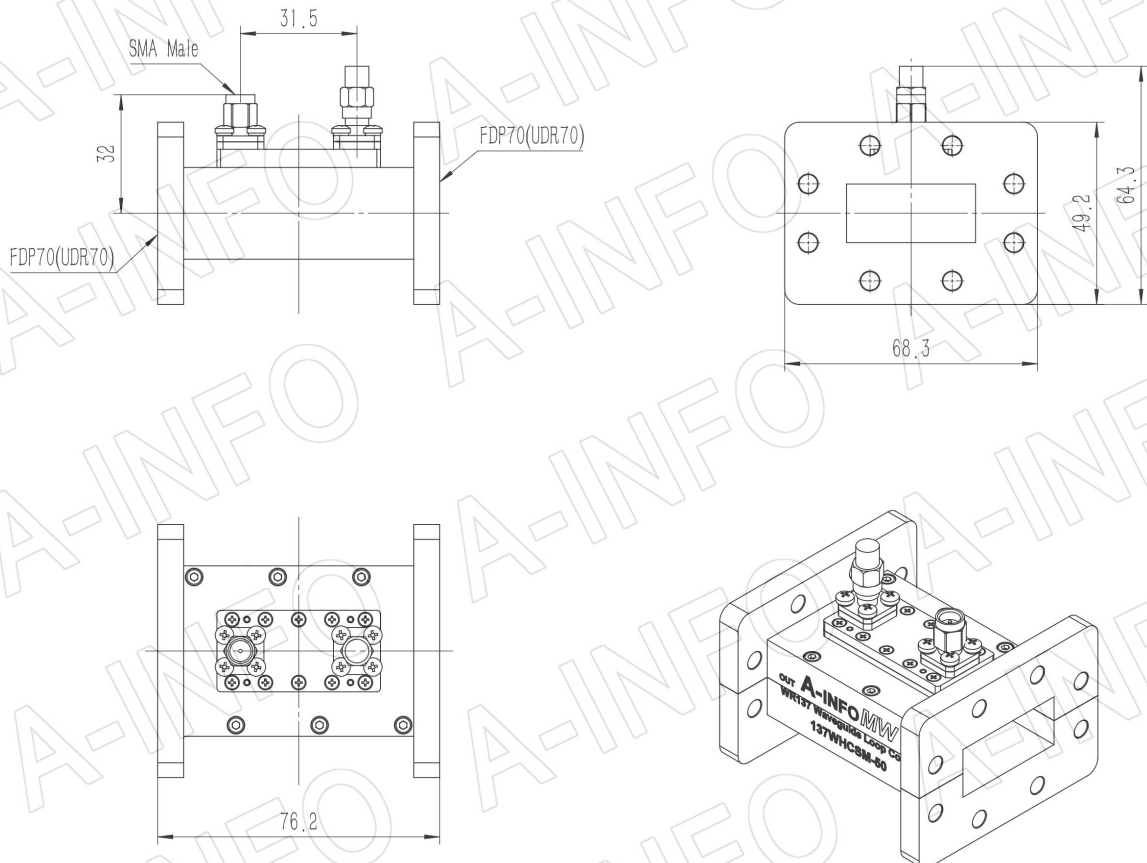


EIA WR	WR137
Frequency Range(GHz)	5.85 – 8.20
Coupling(dB)	50
Directivity(dB)	15 Typ.
Insertion Loss(dB)	0.1 Max. (Not including the theoretical loss 4.34×10^{-5} dB)
Mainline VSWR	1.10:1 Max.
Secondline VSWR	1.35:1 Max.
Flange	FDP70(UDR70)
Coupling Port	SMA-Male
Material	Al
Finish	Chemical Conversion Coating, Gray Paint
Size(mm)	76.2 x 68.3 x 64.3
Net Weight(Kg)	0.24 Around

Outline Drawing (Size: mm)

Coupling Port: SMA-Male

For SMA-Female connector Coupling Port outline drawing, please contact A-INFO.



AINFO Inc.

China(Beijing):
China(Chengdu):
USA :

Tel: (+86) 10-6266-7326,
Tel: (+86) 28-8519-2786,
Tel: (+1) 949-639-9688,

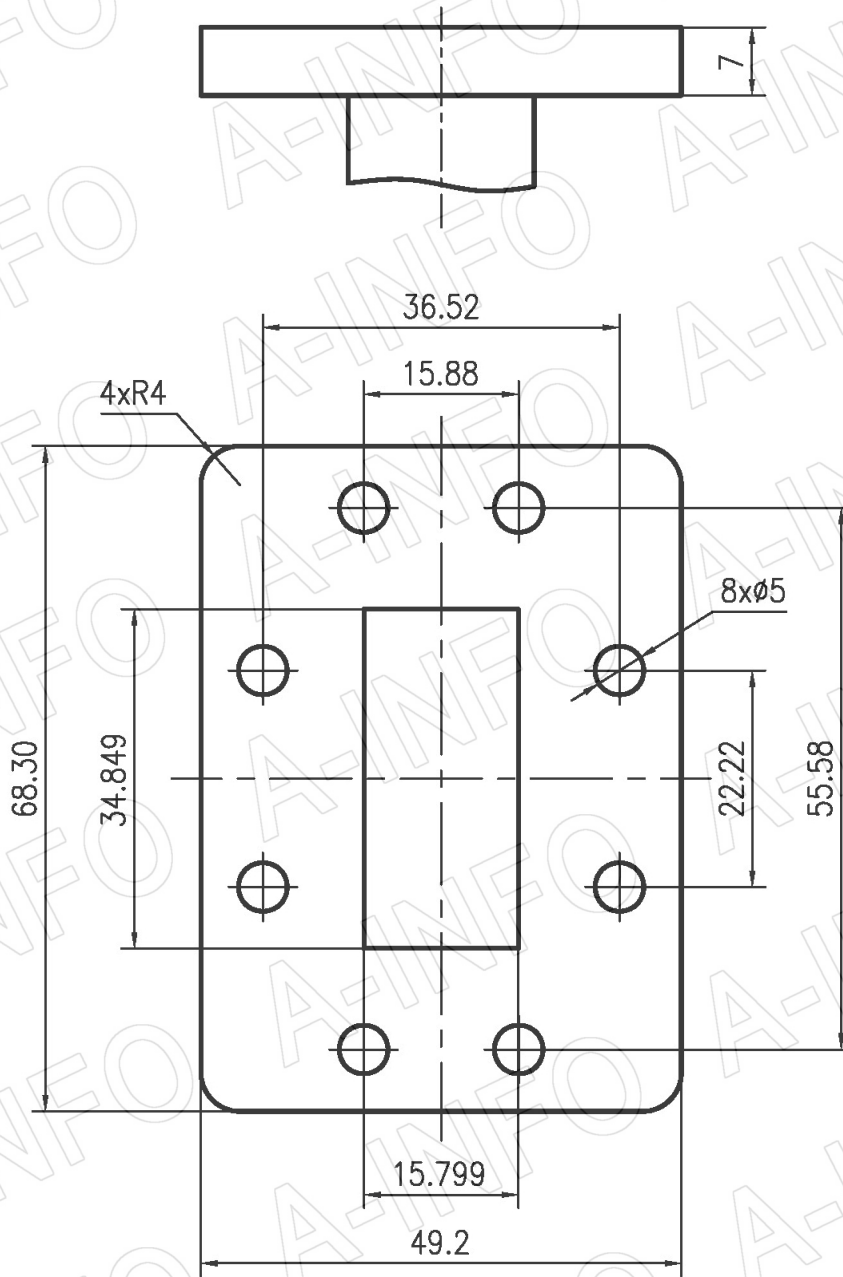
Page 1 of 5

(+86) 10-6266-7327
(+86) 28-8519-3044
(+1) 949-639-9608

Fax: (+86) 10-6266-7379
Fax: (+86) 28-8519-3068
Fax: (+1) 949-639-9670

Website: www.ainfoinc.com
Email: sales@ainfoinc.com

Flange Drawing (Size: mm)



FDP70

AINFO Inc.

China(Beijing): Tel: (+86) 10-6266-7326,
China(Chengdu): Tel: (+86) 28-8519-2786,
USA: Tel: (+1) 949-639-9688,

Page 2 of 5

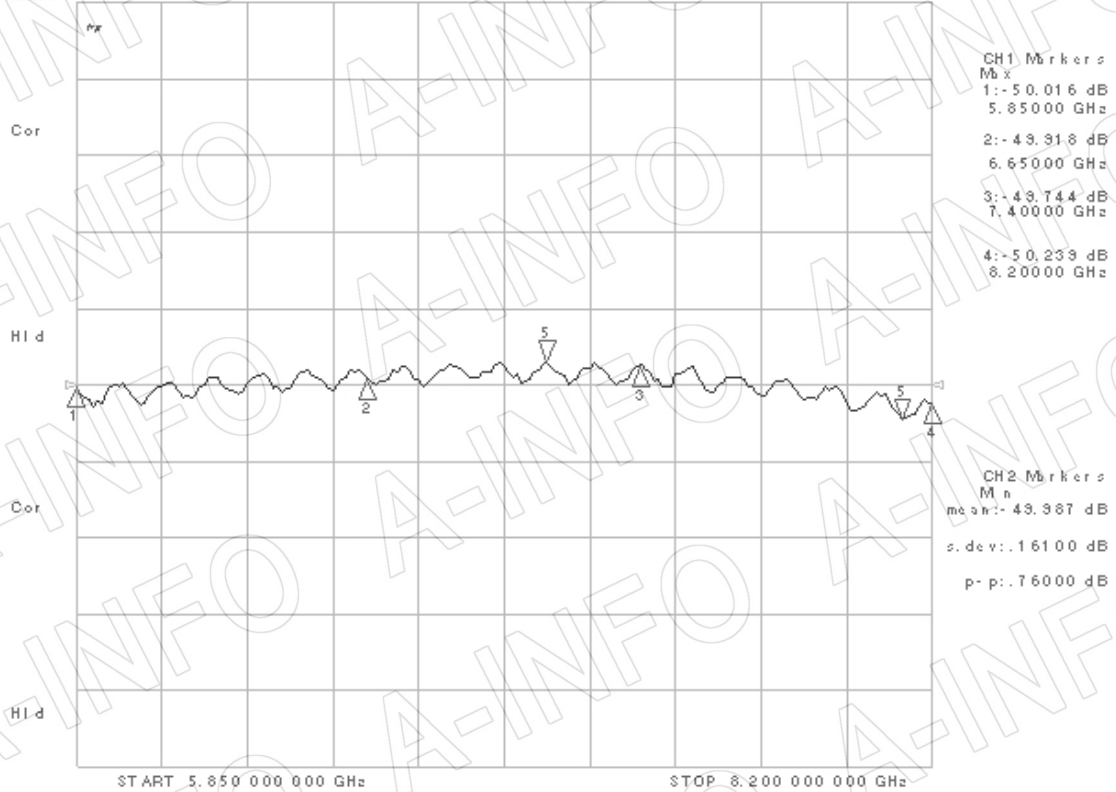
(+86) 10-6266-7327 Fax: (+86) 10-6266-7379
(+86) 28-8519-3044 Fax: (+86) 28-8519-3068
(+1) 949-639-9608 Fax: (+1) 949-639-9670

Website: www.ainfoinc.com
Email: sales@ainfoinc.com

Test Results

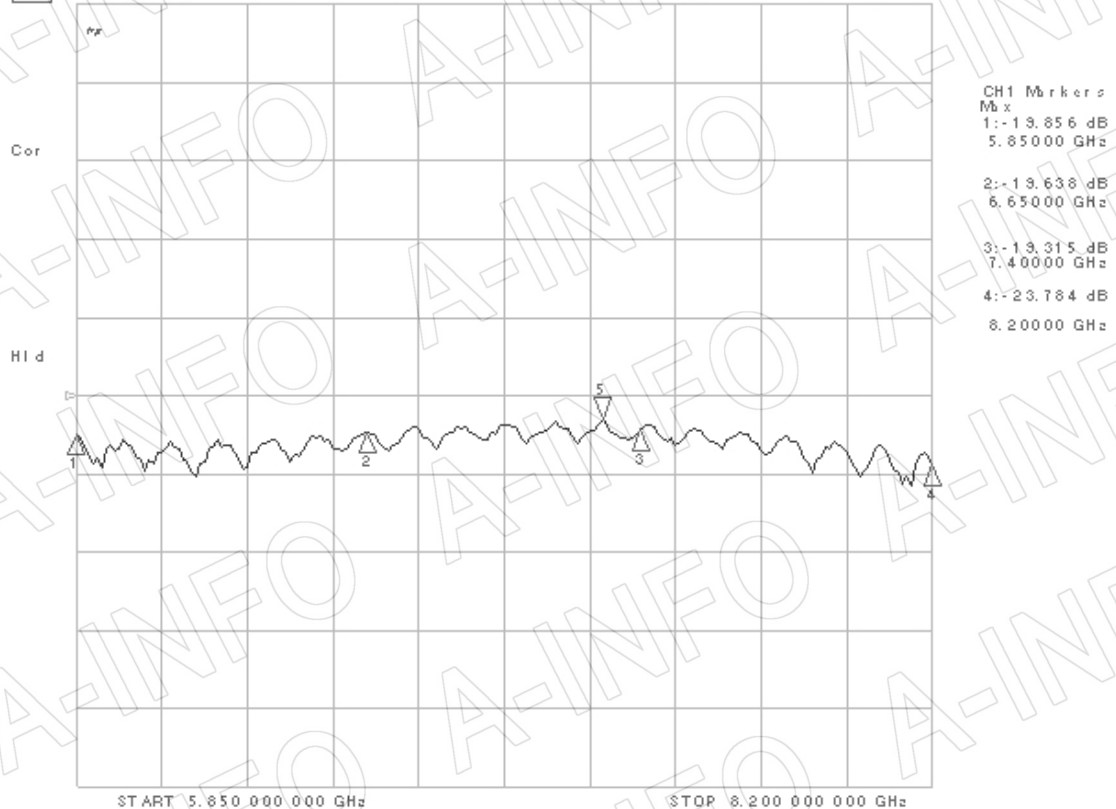
Coupling

CH1 S12 LOG 1 dB/ REF -50 dB 5: -49.704 dB 7.142 500 000 GHz
 CH2 S12 LOG 1 dB/ REF -50 dB 5: -50.464 dB 8.117 750 000 GHz

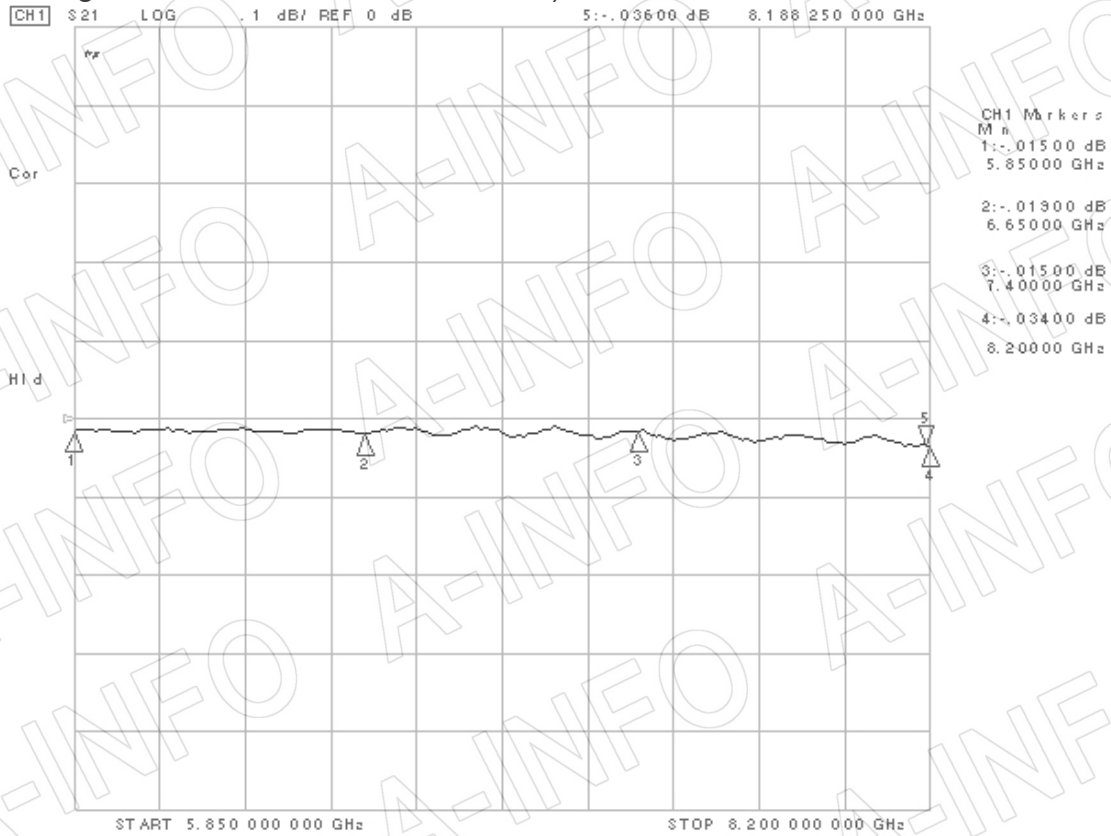


Directivity

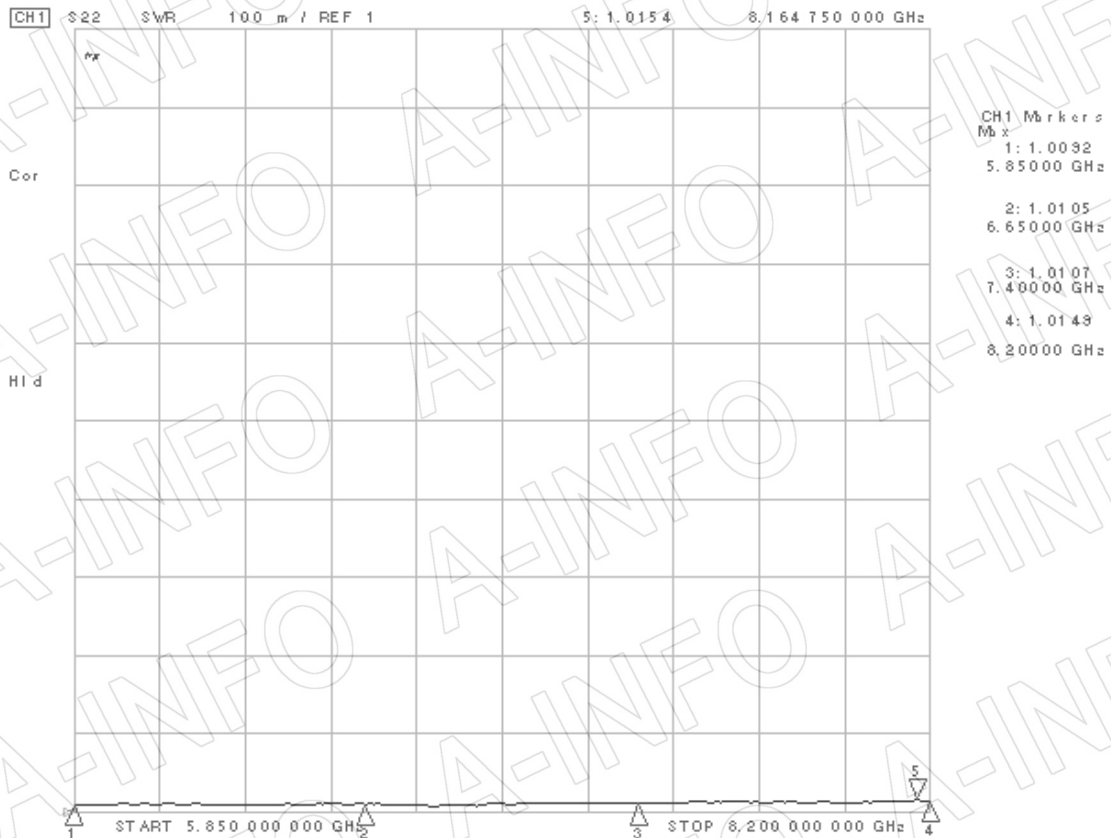
CH1 S12/ M LOG 10 dB/ REF -15 dB 5: -17.900 dB 7.235 250 000 GHz



I.L. (Including the theoretical loss 4.34×10^{-5} dB)

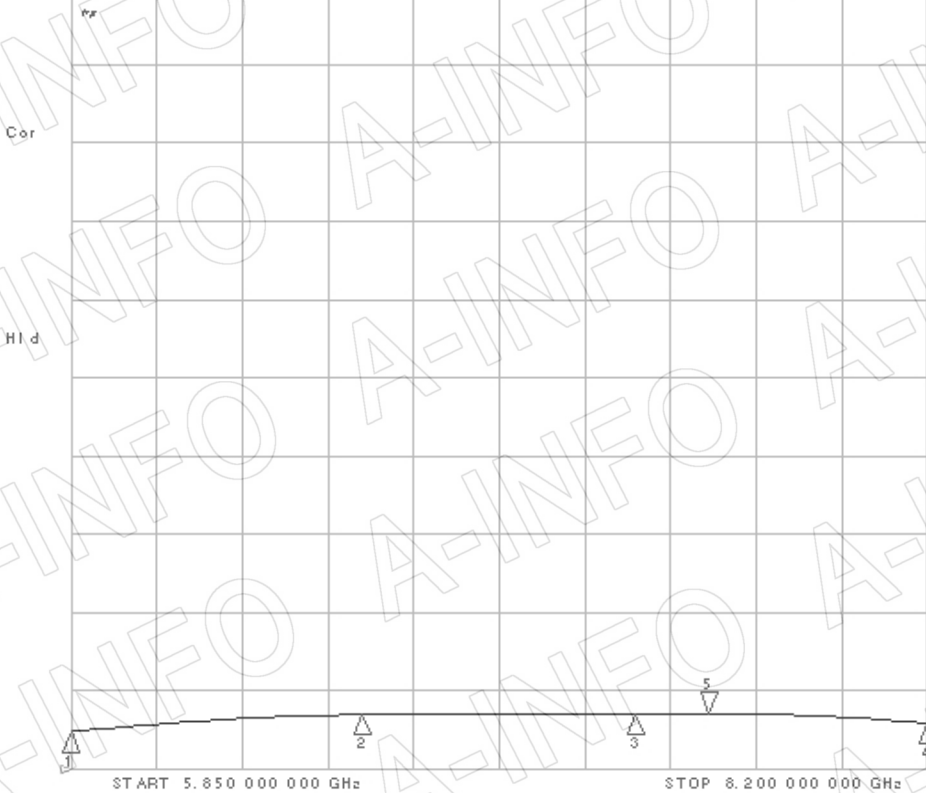


Mainline VSWR



Secondline VSWR

CH1 S22 SWR 350 m / REF 1 5: 1.2436 7.600 750 000 GHz



CH1 Markers
Mx
1: 1.1637
5.85000 GHz
2: 1.2456
6.65000 GHz
3: 1.2482
7.40000 GHz
4: 1.2048
8.20000 GHz